



University of Utah - Spring 2024

SCI 3900/HONORS 3990 - Being Human In STEM

STEM Students are hungry too!

Cecilia Knapp, Tristan Schiess, Hannah Sheppard, Ashton Xu





Meet The Team!



Cecilia Knapp

Honors Biology
Biochemistry Emphasis
Chemistry Minor
she/her/hers



Hannah Sheppard

Honors Biology
Anatomy and Physiology Emphasis
Chemistry Minor
she/her/hers



Tristan Schiess

Astrophysics
he/him/his



Ashton Xu

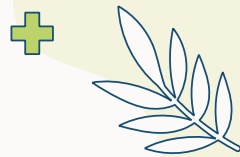
Honors Computer Science
he/him/his



Our Motivation

1. The importance of food for mental health, physical health, and academic success.
1. We have struggled with food accessibility while at school due to:
 - a. Lack of proximity of dining to STEM buildings.
 - b. Many dining locations being closed when long and late labs/classes conclude.
 - c. Lack of options.
1. We wanted to use this opportunity to make a change for STEM students.





An Overview:

1. The Problem

There is a lack of food accessible on near President's Circle

2. Data

Going over the survey we distributed and its results.

3. Talking to the experts

Discussing what the experts had to say.

4. Solutions

What we think the U could do to improve its food accessibility.





Being Human in STEM Honors/SCI 3990

FOOD ACCESSIBILITY ON CAMPUS

We would love to hear about your experiences with food on campus! Tell us by filling out this survey!

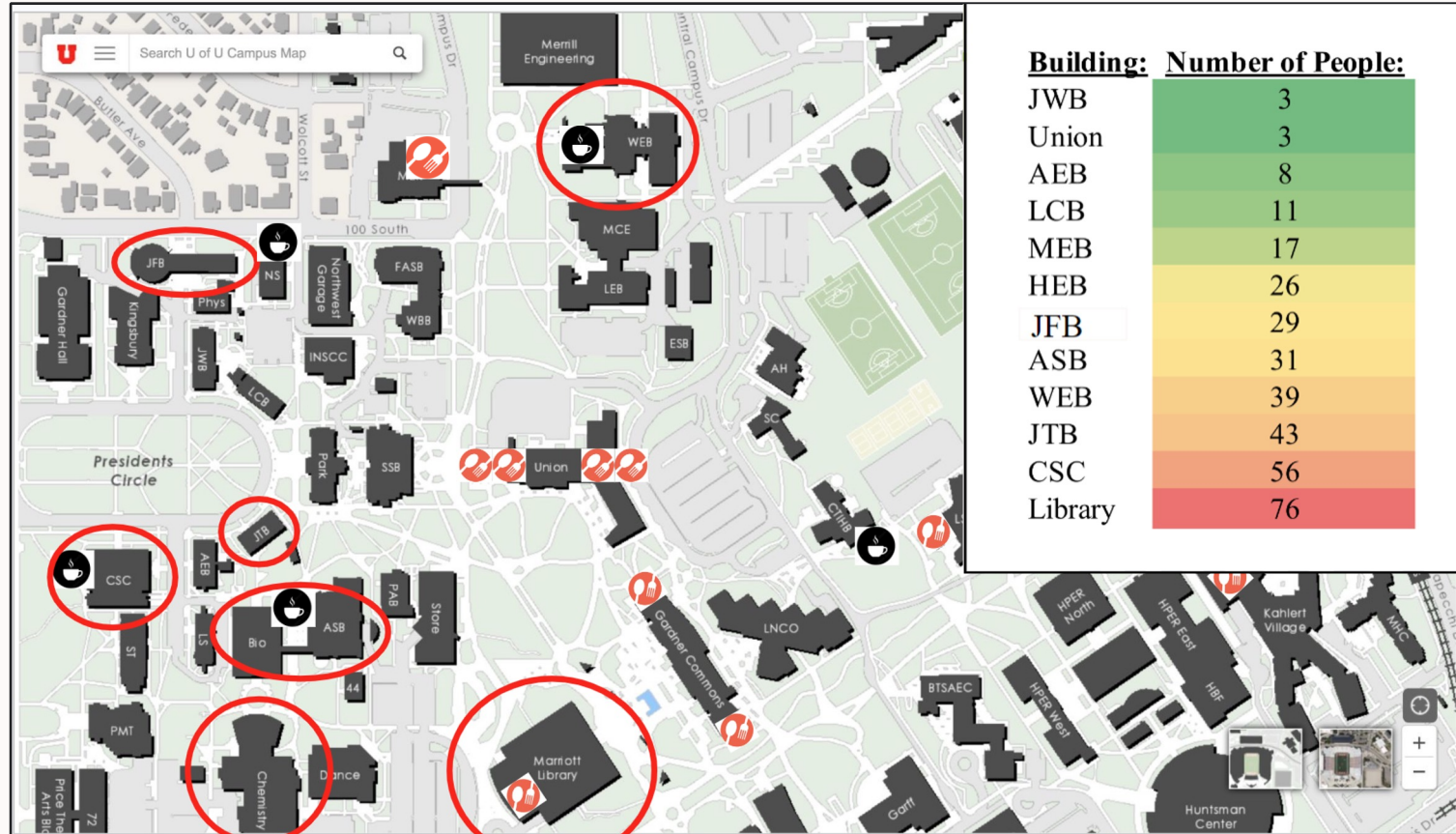


We Conducted A Survey!



- The survey was distributed in classes, by word of mouth, and through posters displayed in various STEM buildings.
- The survey was open for 3 weeks between March and April.
- We had 148 total respondents, 130 of which were STEM students.

Dining Locations - The Relationship to STEM Buildings



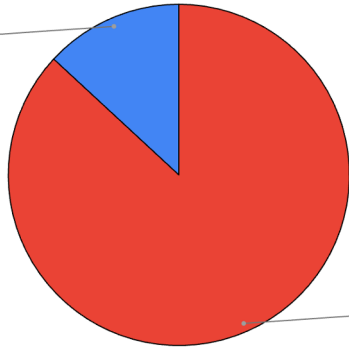
Students That Took The Survey

- 87% were STEM majors.
- 68% do not have a meal plan.
- 65% do not live on campus.

Are you a STEM major?

No

13.1%



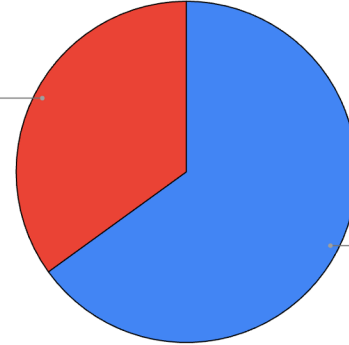
Yes

86.9%

Do you live on campus?

Yes

35.0%



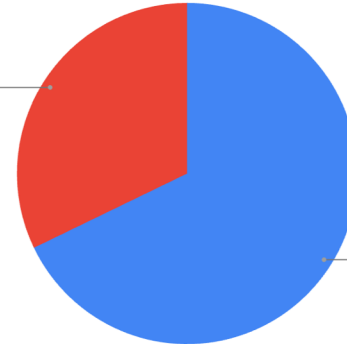
No

65.0%

Do you have a meal plan?

Yes

32.2%

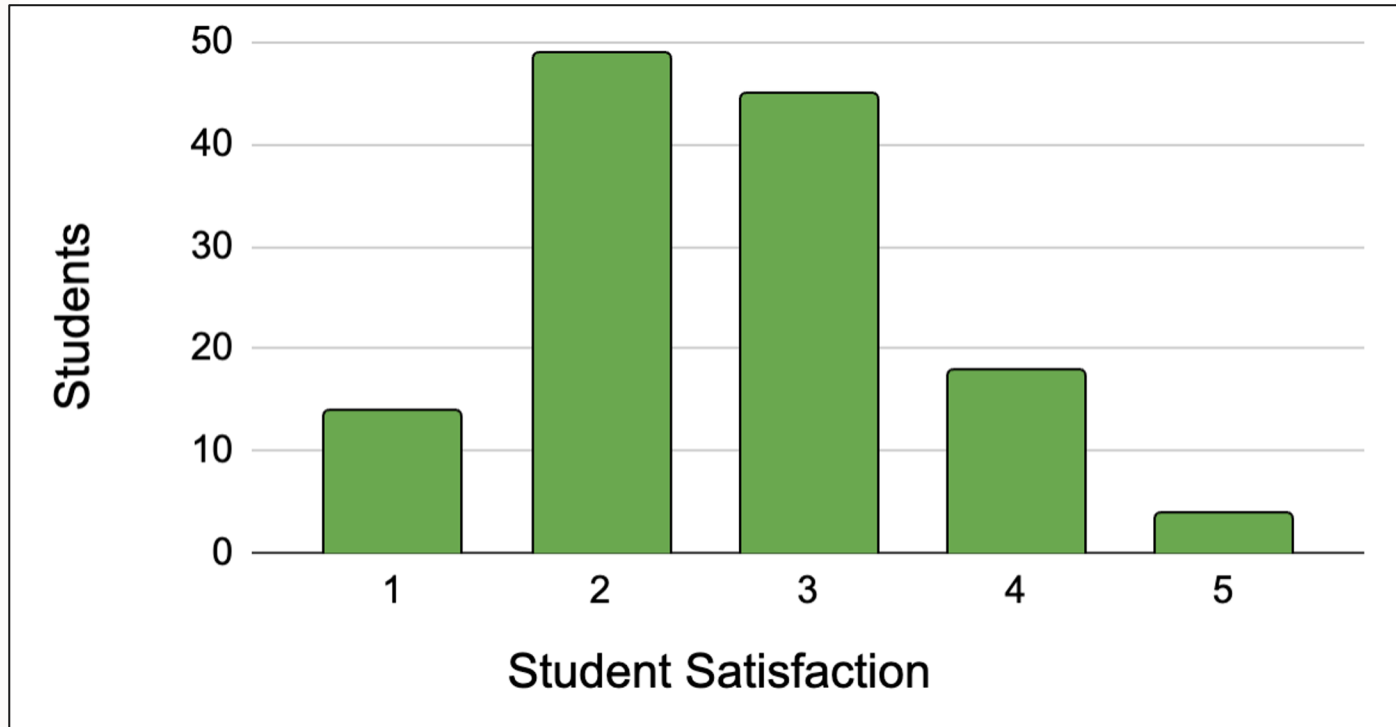


No

67.8%

Satisfaction

We found an overall dissatisfaction with the food options on campus.





Students' Typical Food Choice

Buy Food From On Campus Locations

63%



Bring Food From Home

47%



Off Campus Locations

18%



Food Trucks

16%



Do Not Eat

15%

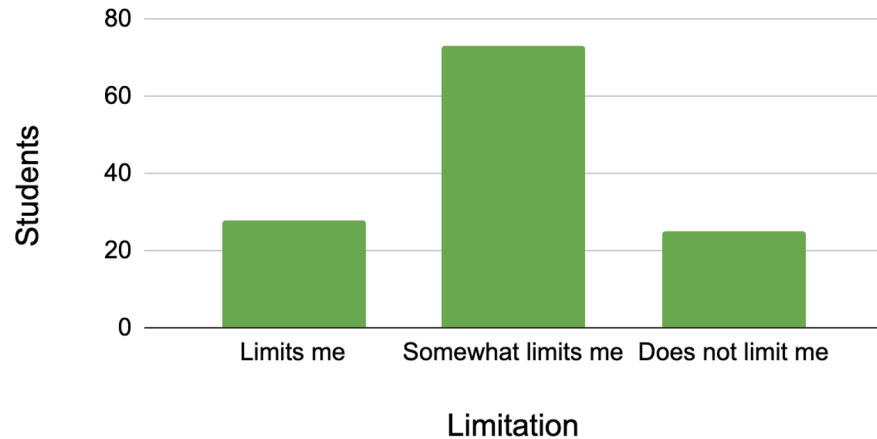


Students could select multiple options during this portion of the survey!

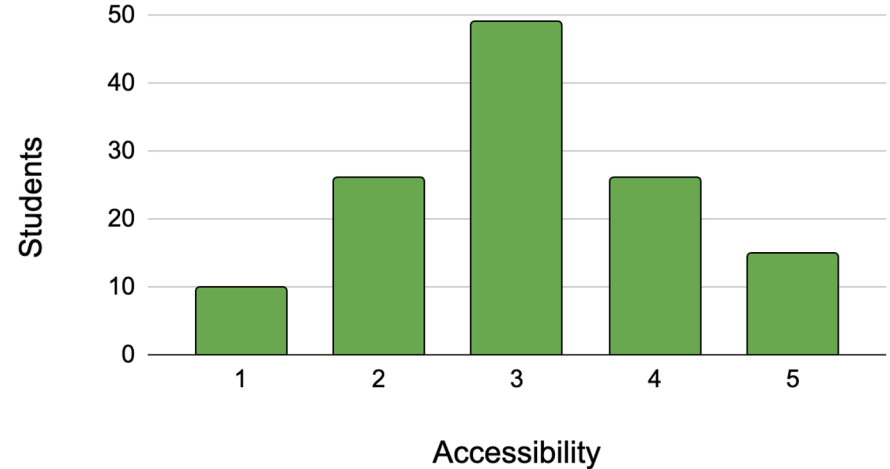


Accessibility

To what extent do the food options/locations, available to you, limit your ability to eat enough during a school day?



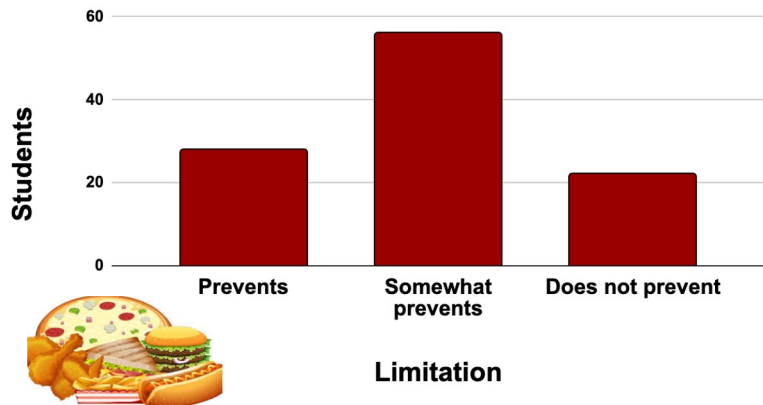
How accessible are food options on campus to you?



Most STEM students feel that there are some limitations that affect their food accessibility on campus.

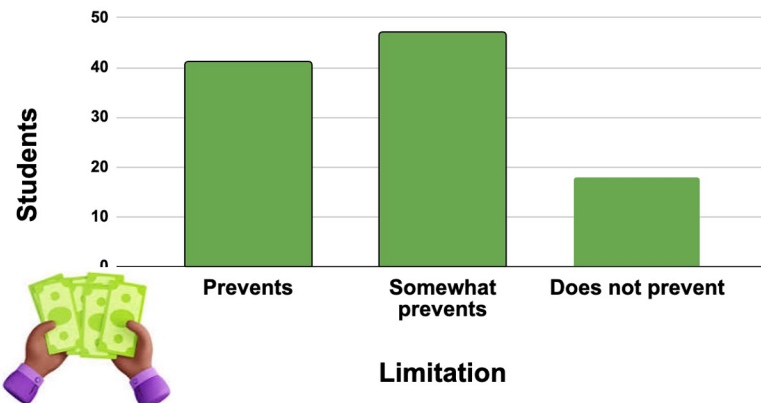
Food Options

How much do the factors listed prevent you from getting food on campus?



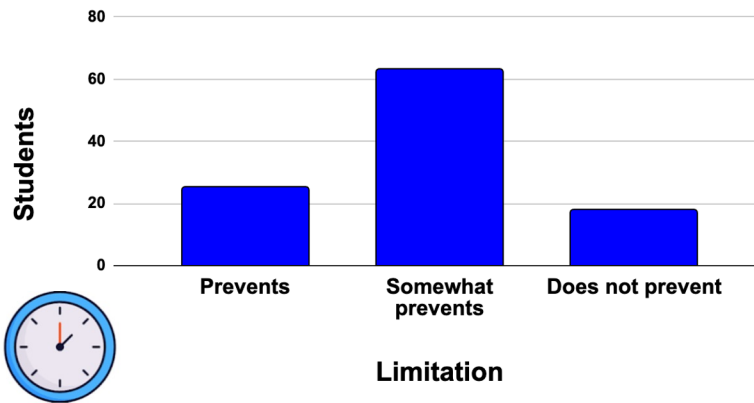
Money

Count of How much do the factors listed prevent you from getting food on campus?

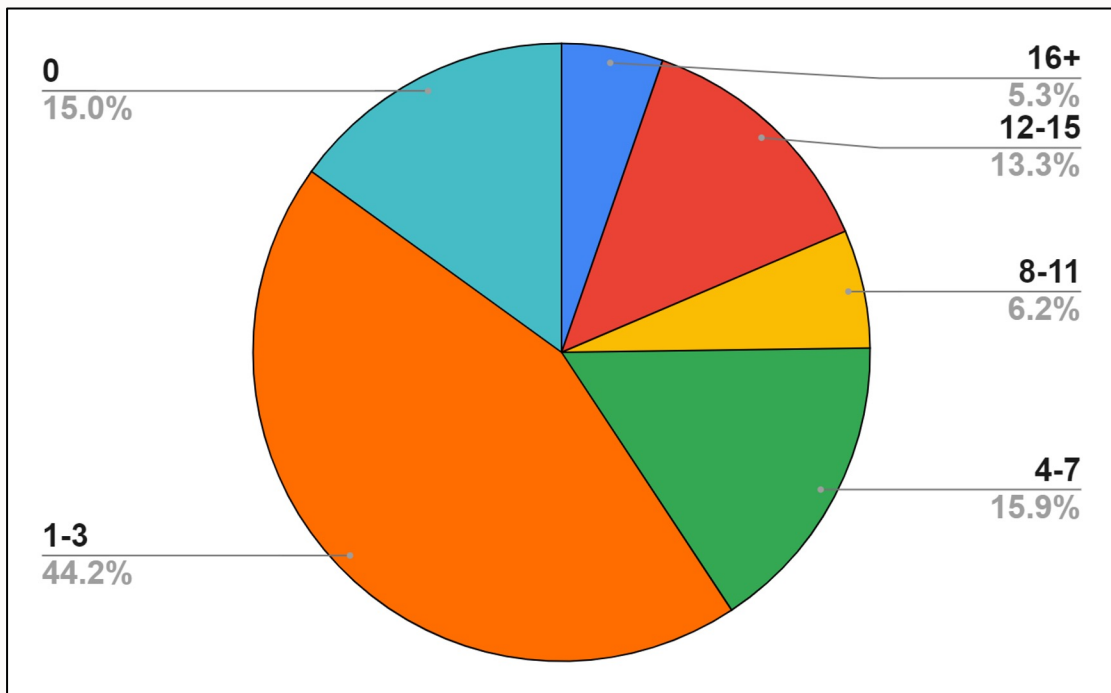


Time

How much do the factors listed prevent you from getting food on campus?

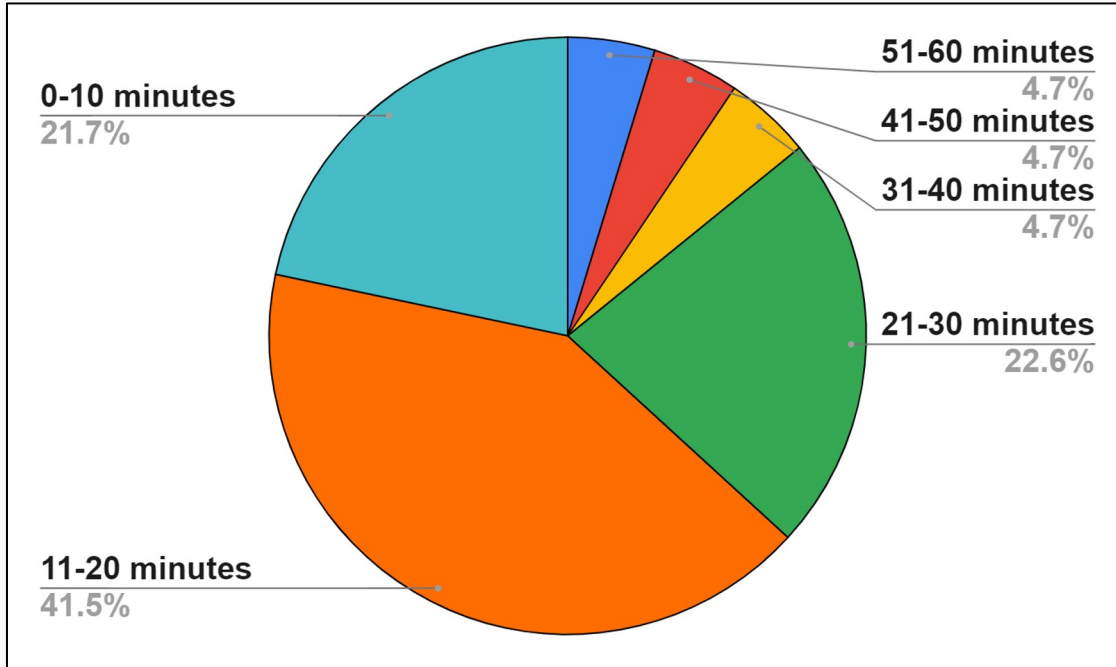


How many meals a week do students buy food on campus? (Including Meal Plan Purchases)



- The majority of students buy between 1-3 meals on campus.
- This may be due to lack of accessibility.

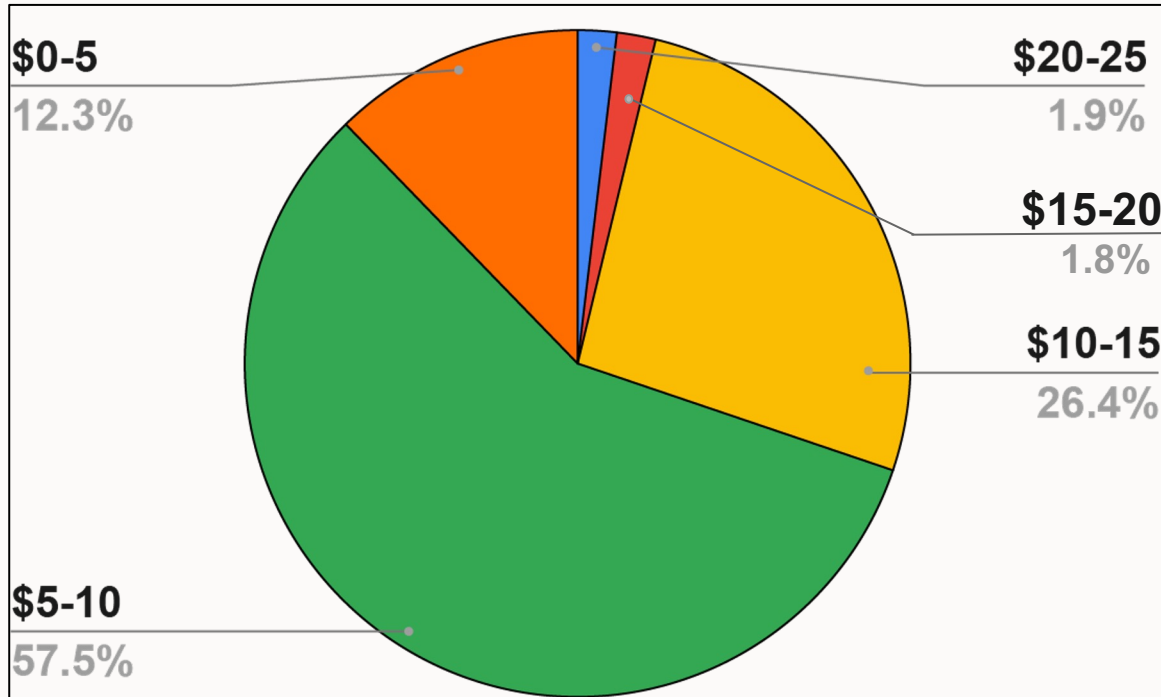
How much time does it take to commute and get food?



- The majority of students say it takes more than 10 minutes to get food on campus.
- Only about 22% of students can get food in less than 10 minutes when the break between classes is often 15-25 minutes.



How much a student is willing to spend eating on campus per meal?



- Students are more willing to spend money for meals on campus if they are less than \$10.
- Keeping price affordable and low is very important to students.

Meeting with David Ko

Associate Director for Dining Services

Contact Information:

801-213-0688

dko@housing.utah.edu

What We Talked About!

- Discussed the role Chartwells plays in campus dining.
- We expressed how we as STEM students find it hard to access food close to President's Circle.

Solutions We Discussed With David

- Bringing food trucks to President's Circle.
- The higher the demand for food with expansion of students on campus, the more food options will be added.
 - creating student boards to get student input.
- Continuing the dialog between students and decisions makers
 - suggestions, concerns, etc.



chartwells
catering



Meeting with Jim Muller

Executive Director of Facilities Management
College Of Science

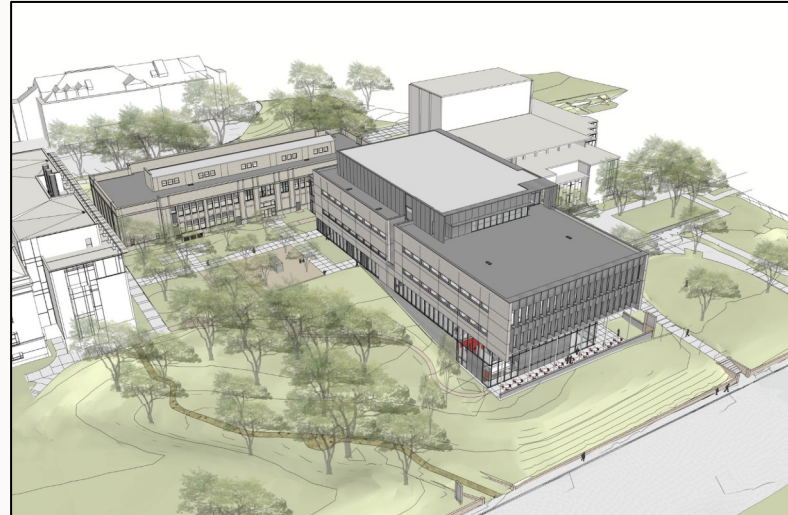
- Atmospheric science and physics are moving buildings.
- Discussed the possibility of food options to The William Stewart Building for Applied Sciences.
 - He told us it was planned that a small coffee cart is being added that can be taken outside on nice days.
- Implementing food in the new Life Sciences Building.
 - The future of possibly involving more student voices through focus groups.



Contact Information:

u0028443@utah.edu

801-581-5415



Summary of Challenges

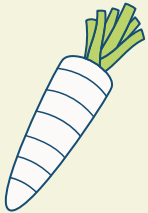


Separate Contractors

Different food locations are contracted by different colleges across campus.

Lacking Residential Demand

Near President's Circle, there is no residential housing. This decreases demand during the weekend. There is a higher future demand as the campus population grows.



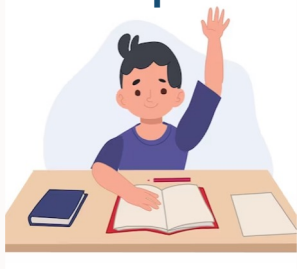
High Food Prices

Food in general is very expensive so the school has to find a balance between satisfying students needs while also making a profit.

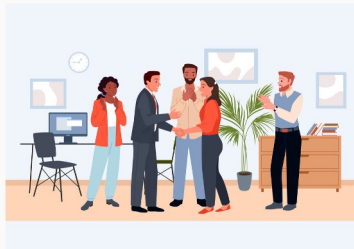


Solutions To Implement

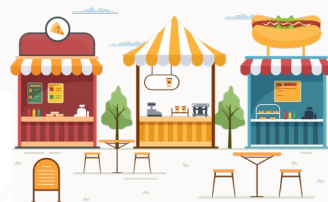
Voice concerns to staff, they want to know what they can improve!



Encouraging leaders to be open and listen to students



Putting a food option into the new Life Sciences Building



Adding Food Trucks near President's Circle



Creating Student Boards



Thank you to those who helped make this project successful!

- Our Professors: Claudia, Rodolfo, and Jordan
- Our Learning Assistant Jess
- David Ko
- Jim Muller
- Our Classmates



Ask Us Questions!

We have learned a lot from this project and cannot fit this all in 15 minutes.
We would love to talk to you all more about this topic!

